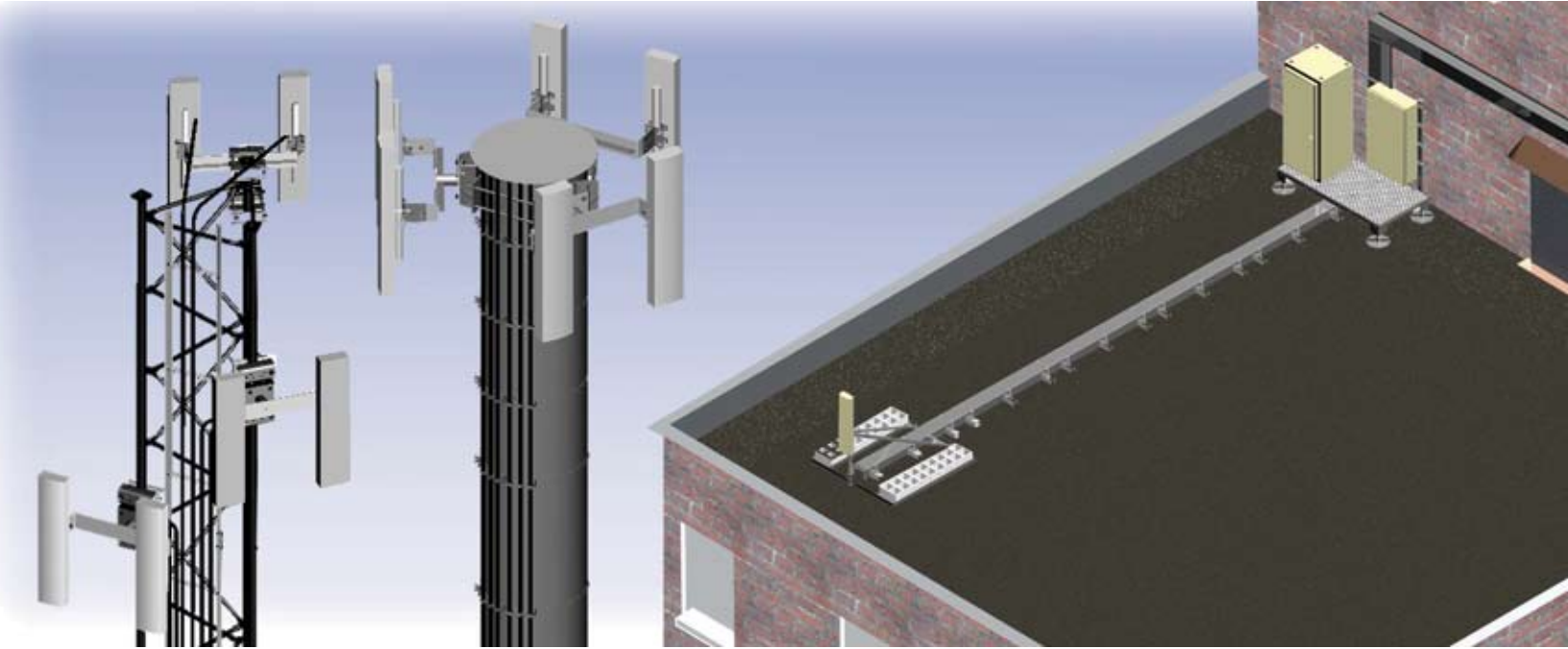


Steel Products



WiMAX Mounting Solutions



DA-SM3-B



PM-DAC235-B



PTR Series

SELF SUPPORT/LATTICE TOWER MOUNTS

Double Antenna Mount Kits for Self Support/Lattice Towers

- Includes two-piece universal saddle mount
- Mounts to straight or tapered legs up to 8" OD, 8" angle 60°, or 6" angle 90°
- Allows for 2-3/8" OD, 2-7/8" OD or 3-1/2" OD mounting pipes
- Mounting pipes purchased separately

Part Number	Description	Wt. lb	Wt. kg	Kit Qty
Self Support / Lattice Tower Mounts				
DA-SM3-B	Universal Double Antenna Mount Base Kit, for straight or tapered legs up to 8" OD, 8" angle 60°, or 6" angle 90°, order pipes separately	145	65.8	EA
PM-DAC235-B	Universal Double Antenna Clamp Base Kit, for straight or tapered legs up to 8" OD, 8" angle 60°, or 6" angle 90°, order pipes separately	175	79.4	EA

POWER TELCO RACKS

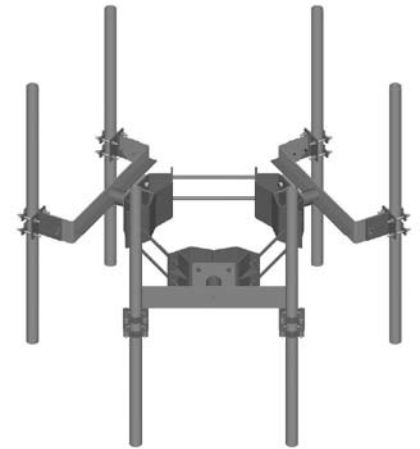
- One, two, or three rung kits
- 3-1/2" x 126" vertical pipes
- U-bolt design for ease in assembly

Part Number	Description	Wt. lb	Wt. kg	Kit Qty
Power Telco Racks				
PTR102	Power Telco Rack, (2) 80" rungs, 10' 6" burial posts	135	61.3	EA
PTR103	Power Telco Rack, (3) 80" rungs, 10' 6" burial posts	150	68.1	EA
PTR104	Power Telco Rack, (4) 80" rungs, 10' 6" burial posts	165	74.9	EA

MONOPOLE MOUNTS

Double Antenna Mount Kits for Monopoles

- Three sizes available
- Low profile design
- Allows for 2-3/8" OD, 2-7/8" OD, or 3-1/2" OD mounting pipes
- Mounting pipes purchased separately



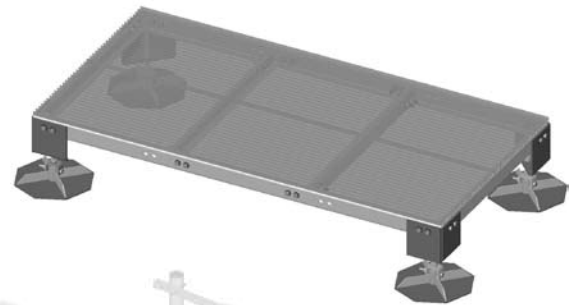
MC-DA3 Series

Part Number	Description	Wt. lb	Wt. kg	Kit Qty
<i>Monopole Mounts</i>				
MC-DA3S-B	Universal Double Antenna Mount Base Kit, for 10" to 30" OD Monopoles, order pipes separately	600	272.2	EA
MC-DA3M-B	Universal Double Antenna Mount Base Kit, for 15" to 50" OD Monopoles, order pipes separately	650	294.9	EA
MC-DA3L-B	Universal Double Antenna Mount Base Kit, for 30" to 60" OD Monopoles, order pipes separately	700	317.6	EA

EQUIPMENT PLATFORM

Lightweight Equipment Platform

- Adjustable legs for roof-top or raw land applications
- Easy-to-assemble bolt together design



MTC9336B4DF

Part Number	Description	Wt. lb	Wt. kg	Kit Qty
<i>Equipment Platform</i>				
MTC9336B4DF	4' x 8' Equipment Platform with (4) Adjustable Legs	600	272.3	EA

WALL MOUNT

Universal Wall Mount

- Hardware included for solid or hollow walls
- Allows for 2-3/8" OD, 2-7/8" OD, or 3-1/2" OD mounting pipes
- Mounting pipes purchased separately

Part Number	Description	Wt. lb	Wt. kg	Kit Qty
Wall Mount				
WM-235-B	Universal Wall Mount for Single 2-3/8" to 3-1/2" OD (60.3 mm to 101.6 mm) Pipe, order pipe separately	40	18.2	EA



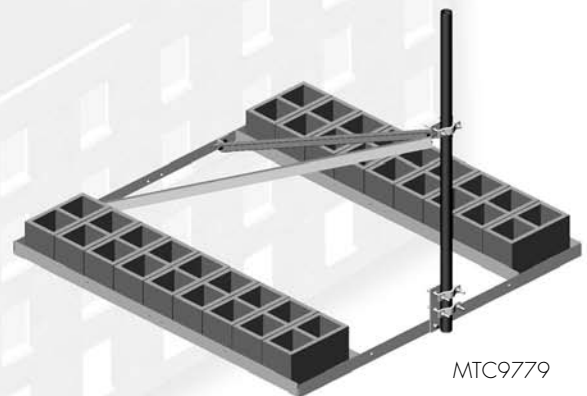
WM-235-B SW

ROOF-TOP MOUNT

Non-penetrating Ballast Mount

- Non-penetrating design
- Allows for 2-3/8", 2-7/8", or 3-1/2" OD mounting pipes
- Mounting pipes purchased separately

Part Number	Description	Wt. lb	Wt. kg	Kit Qty
Non-penetrating Ballast Mount				
MTC9779	Non-penetrating Ballast Mount for Single 2-3/8" to 3-1/2" OD (60.3 mm to 101.6 mm) Pipe, order pipe separately	200	90.8	EA



MTC9779



www.andrew.com

Visit our Web site at www.andrew.com or contact your local Andrew Wireless Solutions representative for more information.

© 2008 CommScope, Inc. All rights reserved.

Andrew Wireless Solutions is a trademark of CommScope. All trademarks identified by ® or ™ are registered trademarks or trademarks, respectively, of CommScope. This document is for planning purposes only and is not intended to modify or supplement any specifications or warranties relating to Andrew Wireless Solutions products or services.

BR-102358-EN (2/08)