

NEW PRODUCT  
ANNOUNCEMENT



## SnapSeal™ Cable Entry Cushion

SEC-Series Cushions for Coaxial Cable

Weather resistant seal  
(IP 68 rating)

Fast and simple installation

Accepts multiple cables  
through one cushion

Cost effective alternative to  
standard entry boots

Ten year warranty

The SnapSeal entry cushion provides a quick and easy method of entering cables into a wall/roof feed-thru plate with four inch openings.

Exclusively from Andrew Wireless Solutions, the SnapSeal entry cushion is a cleverly designed two-piece cable entry device that snaps onto standard wall/roof feed-through plates.

Using this system provides major advantages to using standard bulky cable boots by greatly reducing the amount of space needed and labor required to install a complete cable entry system.

To install the SnapSeal entry cushion, you simply remove the entry plug from the cushion and place your cushion around the cable. Then place the compression ring around the cushion and push the device over the entry port opening until it snaps into place. The SnapSeal entry cushion is also UV resistant and impervious to temperature, humidity extremes, and vibration.

## SPECIFICATIONS

# SnapSeal™ Cable Entry Cushion

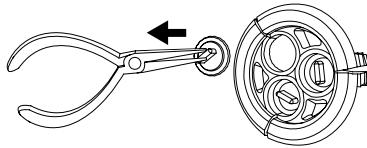
### Ordering Information

SEC-614	SnapSeal entry cushion 6 X 1/4", kit of one
SEC-638	SnapSeal entry cushion 6 X 3/8", kit of one
SEC-412	SnapSeal entry cushion 4 X 1/2", kit of one
SEC-358	SnapSeal entry cushion 3 X 5/8", kit of one
SEC-378	SnapSeal entry cushion 3 X 7/8", kit of one
SEC-1114	SnapSeal entry cushion 1 X 1 1/4", kit of one
SEC-1158	SnapSeal entry cushion 1 X 1 5/8", kit of one
SEC-1214	SnapSeal entry cushion 1 X 2 1/4", kit of one

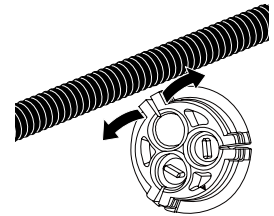
### Mechanical/Environmental

Compression Ring Material:	Polypropylene
Compression Ring Color:	Black
Cushion Material:	Thermoplastic Elastomer (TPE)
Cushion Durometer:	55 ± 5, Shore A scale
Cushion Color:	Black
Temperature range:	-40° C to +85° C
Axial load capability:	≥ 5 times cable weight
Vibration survival:	≥ 4 hours at resonant frequency
UV resistance:	≥ 100 hours exposure in accelerated UV life chamber

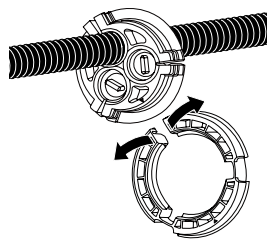
Remove plug



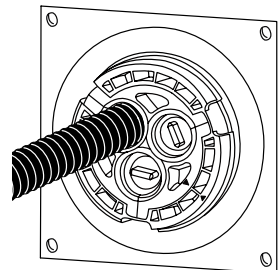
Install cushion over cable



Install lock ring over cushion



Install assembly to entry plate



[www.andrew.com](http://www.andrew.com)

Visit our Web site or contact your local Andrew Wireless Solutions representative for more information.

© 2008 CommScope, Inc. All rights reserved.

Andrew Wireless Solutions is a trademark of CommScope. All trademarks identified by ® or ™ are registered trademarks or trademarks, respectively, of CommScope. This document is for planning purposes only and is not intended to modify or supplement any specifications or warranties relating to Andrew Wireless Solutions products or services.

PA-102167.1-EN (01/08)